

2012

Complete Line of
**Single-Axle,
Ultra-Lite
& Joey Select
Travel Trailers
& Fifth Wheels**

Nomad



Your local *Nomad* dealer is:

SKYLINE[®]
BRINGING AMERICA HOME. BRINGING AMERICA FUN.

Effective May 2011

Dare to Compare

	<u>SKYLINE</u>	<u>Other Brand</u>
3-2-1 Warranty	✓	_____
Individually Weighed — <i>Certified</i> — Posted on Exterior	✓	_____
Rain Tunnel Tested	✓	_____
Simulated Road Tested (Shake Simulator)	✓	_____
Stile & Rail Cabinet Construction on Upper & Lower Cabinets	✓	_____
Seamless One-Piece EPDM Roof with Manufacturer's 12 Year Limited Warranty (Excludes 84" Wide Travel Trailers)	✓	_____
Seamless Aluminum Roof (84" Wide Travel Trailers Only)	✓	_____
Radius Clamp-Ring Windows	✓	_____
Radius Sealed Outside Compartment Doors	✓	_____
5/8" Tongue & Groove Floor (Except 90" Alumabond Fifth Wheels)	✓	_____
Cambered Chassis	✓	_____
R-7 Insulation	✓	_____
Larger-Capacity Holding Tanks	✓	_____
Upgraded Name Brand Appliances	✓	_____
60 Years in Business	✓	_____



Since 1951, we've been building products that measure up to the expectations of our customers. From the very beginning, we've understood that our customers come first. You're the reason we're in business and every member of the Skyline team is committed to bring you nothing less than the best.

This commitment has earned Skyline its nationwide reputation for leadership and uncompromising integrity. Our designers, engineers, and production people work as a team to build RVs that meet your needs. The best RVs at the best prices. Each backed by a straightforward one-year full warranty and a nationwide customer service program that is short on red tape and long on results.

Skyline is a solid corporate citizen having no corporate debt and a strong cash position. For our customers, this means that Skyline has the financial muscle to stand in back of its products and you can count on the fact that Skyline will be around if you ever need us.

For us at Skyline, "*Bringing America Home. Bringing America Fun.*" is more than a slogan. It is a statement of our responsibility to a country that has been good to us. It is a pledge to extend our record of leadership, to continue the long tradition of superior service, and to strengthen the trust placed in us by the customers we are privileged to serve. It is our determination to serve America and its people with quality, affordable recreational vehicles for many years to come.



Interior

Cabinets

- High Pressure Laminate Counter Tops

Decor

- Color-Coordinated Designer Interiors
- Embossed Vinyl Flooring
- Padded Dinette Seat Cushions
- Mini Blinds at All Windows Except Bunks

Kitchen & Living Room

- 3 cu. ft. Dometic® Gas / Electric Refrigerator
- Wedgewood® 2 Burner Range Top
- 0.7 cu. ft. Dometic® Microwave Oven w/Turntable & Clock
- Acrylic Kitchen Sink w/Faucet
- 12 Volt Demand Water Pump
- 16,000 Btu Furnace
- 13,500 Btu Air Conditioner
- 35 amp 12 Volt Power Convertor w/120 Volt Load Center
- Six Gallon Gas Water Heater
- TV Antenna w/Living Area Jack

Bath

- ABS Tub w/Tub Faucet, Shower Hose & Head
- Shower Curtain
- Hand Flush Thetford Toilet
- Towel Ring & Toilet Paper Holder

Exterior

Roof Construction

- Seamless One-Piece Aluminum Roof
- Awning Drip Rail & Down Spouts

Wall Construction

- Wall Studs on 16" Centers (Maximum)
- Steel Strap Reinforcement on Walls for Superior Durability
- R-7 Settle-Resistant Insulation
- Twist Locks on All Storage Doors
- Clamp Ring Radius Corner / Dark Tint Glass Windows
- Patio Convenience Light
- Radius Entry Door w/Screen
- Assist Handle at Entry Door

Chassis Construction

- Cambered Tubular Steel Chassis w/Steel Outriggers
- Battery Rack
- Chassis-Mounted Entry Step
- Electric Brakes at All Wheels
- Goodyear® Radial Tires
- Spare Tire & Carrier
- Safety Chains & Breakaway Safety Switch
- Two Stabilizer Jacks
- Sidewinder Tongue Jack w/Foot

Floor Construction

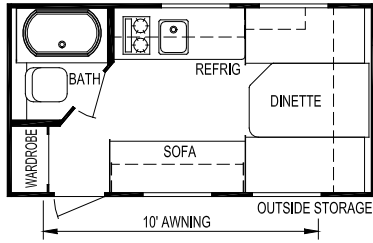
- 5/8" Tongue & Groove Floor Decking
- Tightly Sealed Woven Polyethylene Underbelly

Features

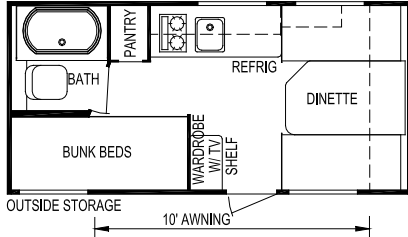
- Single 20 lb. LP Propane Tank
- Holding Tanks w/Drain Outlet
- Rear Bumper w/Sewer Hose Carrier
- 10' A&E® Sunchaser Side Awning (12' on Models 173 & 186)

Security & Safety

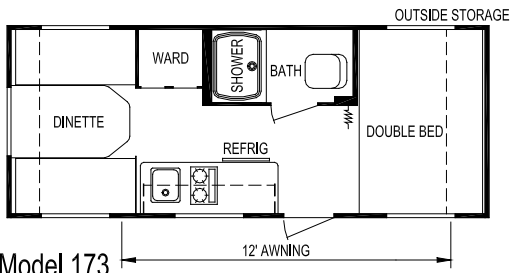
- Smoke Detector
- Propane Leak Detectors
- Carbon Monoxide Alarm
- Flush Door Latch w/Integral Dead Bolt Lock
- Fire Extinguisher



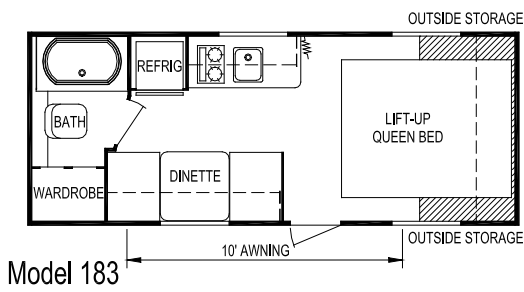
Model 140



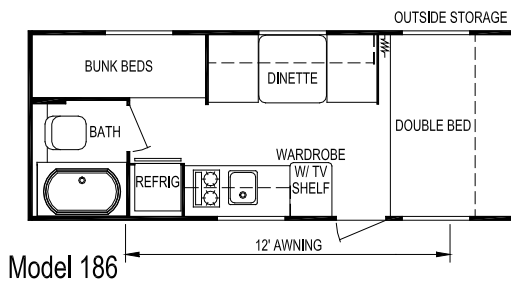
Model 162



Model 173



Model 183



Model 186

Model	140	162	173	183	186
Weights Unloaded Vehicle Weight (see Note 2)	2,150	2,450	2,725	2,600	2,675
Dry Hitch Weight	275	400	325	375	350
Dry Axle Weight	1,875	2,050	2,400	2,225	2,325
GVWR (Total Capacity of Trailer)	3,850	3,850	3,850	3,850	3,850
Carrying Capacity (see Note 2)	1,600	1,300	1,000	1,150	1,075
Accommodations Sleeping (standard / optional)	3	4	4	3	5
Bed Size	N/A	(2) 32" x 75"	54" x 80"	60" x 74"	54" x 80"
Second Bed Size	N/A	N/A	N/A	N/A	(2) 28" x 75"
Dinette Size	52" x 80"	52" x 80"	52" x 80"	30" x 76"	30" x 75"
Sofa	22" x 59"	N/A	N/A	N/A	N/A
Measurements Exterior Length (see Note 3)	15'-10"	17'-2"	20'-1"	20'-4"	20'-6"
Exterior Width (see Note 3)	84"	84"	84"	84"	84"
Exterior Height (see Note 3)	8'-6"	8'-6"	8'-8"	8'-8"	8'-8"
Interior Height	73"	73"	73"	73"	73"
Capacities Fresh Water System (gallons)	18	18	18	26	26
Gray Water Tank (gallons)	15	15	15	15	15
Black Water Tank (gallons)	10	10	10	10	10
Air Conditioner Size (Btu)	13,500	13,500	13,500	13,500	13,500
Awning Size	10'	10'	12'	10'	12'
Converter Size (amps)	35	35	35	35	35
Furnace Rating (Btu)	16,000	16,000	16,000	16,000	16,000
Propane Gas Capacity (pounds)	20	20	20	20	20
Tires	ST185/ 80R13-C	ST185/ 80R13-C	ST205/ 75R14-C	ST205/ 75R14-C	ST205/ 75R14-C
Water Heater (gallons)	6	6	6	6	6

Notes

- (1) All weights, dimensions, and capacities shown are approximate values.
- (2) Unloaded vehicle weight and carrying capacity will vary depending upon optional equipment. Full propane tanks are factored into carrying capacity. Skyline weighs every unit at the factory. See trailer weight information label located inside the front entry door for specific unloaded vehicle weight and cargo carrying capacity.
- (3) Dimensions stated to industry standards. Exterior length includes approximately a four foot hitch on travel trailers. Exterior height includes air conditioner, if installed. Exterior width does not include the width of the awning, if installed.

Interior

Cabinets

- All Wood Drawers w/Travel Lock Guide System
- High Pressure Laminate Countertops
- Durable Solid Wood-Framed Cabinet Doors w/Raised Panel Insert in Kitchen & Living Area Overhead

Decor

- Color-Coordinated Designer Interiors
- Box Valance on All Living Area Windows
- Mini Blinds
- Embossed Vinyl Flooring
- Sofa w/Accent Pillows (Per Floor Plan)
- Decorative Glass Doors in Select Overhead Cabinets

Kitchen & Living Area

- Acrylic Kitchen Sink w/Deep 60/40 Basin
- High Rise Kitchen Faucet
- Wedgewood® Three-Burner Range w/ Oven & Piezo
- Lighted Range Hood w/Fan
- Park Cable for TV Hookup
- 120 V to 12 V Power Convertor (55 amps)
- AM/FM/DVD Stereo w/USB & iPod Connections & 4 Speakers
- 6 Gallon Gas/DSI Water Heater
- Monitor Panel
- Microwave Oven w/Carousel
- Large Double Door Refrigerator

Bedroom / Bath

- TV Hookup (Where Applicable)
- Color-Coordinated Quilted Bedspread
- Evergreen® Mattress
- Power Bath Exhaust Fan
- Medicine Cabinet w/Mirror
- Towel Ring

- Bath Skylight Over Tub /Shower
- ABS Tub/Shower
- Bath Tub/Shower Surround
- Shower Curtain Valance
- Deluxe Medicine Cabinet
- Deluxe Headboard

Exterior

Roof Construction

- Tapered Trusses on 16" Centers to Promote Water Runoff
- Seamless One-Piece Roof w/ Manufacturer's 12-Year Limited Warranty
- Wide Rain Gutter Rails w/Extra Long Drip Spouts
- R-7 Insulation

Wall Construction

- Fiberglass Exterior w/Custom Styled Exterior Graphics
- Welded Aluminum Frame Sidewalls & Endwalls
- Laminated Sidewall Construction w/ Block Foam Insulation, Steel Cabinet Backers, Lauan Exterior Panel Under Fiberglass Exterior
- Radius Tinted Slider Clamp-Ring Windows
- Radius Entry Door w/Screen Kick Panel
- Flush-Mount Heavy Duty Exterior Trunk Doors w/Continuous Hinge
- Patio Convenience Light

Chassis Construction

- Steel Frame I-Beam Chassis w/Steel Outriggers
- Dual Battery Rack
- Black Rotocast Wheel Wells (Most Models)
- 10" Electric Brakes at All Wheels
- Safety Chains
- Enclosed Underbelly Containing All

- Tanks (Drain Valves Not Enclosed)
- Rear Bumper
- Breakaway Safety Switch
- Stabilizer Jacks (2 at Rear)
- Spare Tire w/Carrier
- Double Entry Step
- Goodyear® Tires
- Exterior Speakers
- Black Tank Flush

Floor Construction

- Tightly Sealed Woven Polyethylene Underbelly
- Laminated Floor Construction w/ Welded Aluminum Frame, Block Foam Insulation & Lauan Plywood Decking

Features

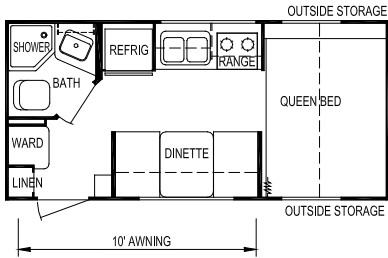
- LP Tanks w/Auto Changeover
- Rotocast Holding Tanks w/Drain Outlet
- Under-Floor Water Tank to Maximize Interior Storage
- Exterior Hitch Light
- Exterior Assist Handle at Each Entry Door
- Exterior Patio Receptacle
- Molded Fender Skirt
- 30 amp Power Shore Line
- Detachable Power Shore Line
- A&E® Power Side Awning
- Propane Bottle Cover
- Exterior Shower
- TV Antenna

Security & Safety

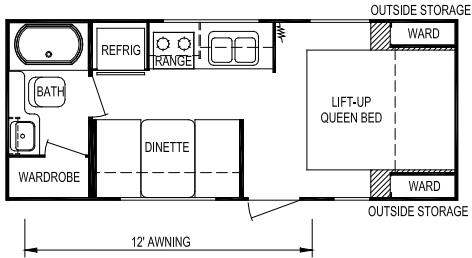
- LP Gas Leak/Carbon Monoxide Detector
- Smoke Detector
- Fire Extinguisher
- Flush Door Latch w/Integral Dead Bolt Lock

Popular Options

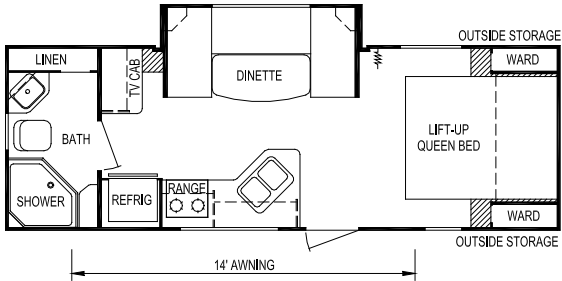
- Vizio® 26" LCD TV
- Chrome Wheels



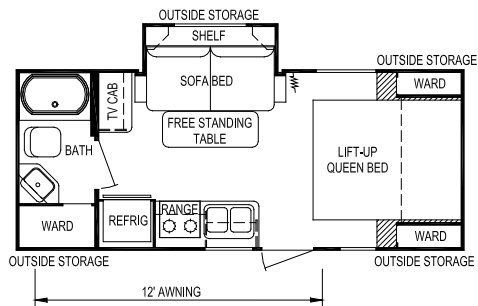
Model 189



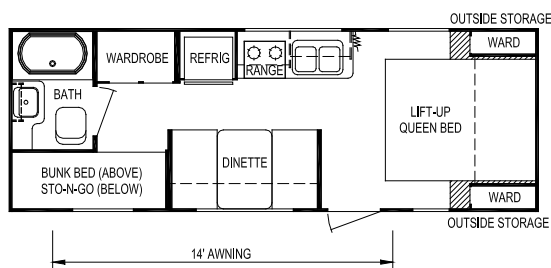
Model 194



Model 206



Model 210



Model 248

Model	189	194	206	210	248
Weights Unloaded Vehicle Weight (see Note 2)	3,300	3,675	4,400	3,925	3,900
Dry Hitch Weight	325	450	500	500	550
Dry Axle Weight	2,925	3,225	3,900	3,425	3,350
GVWR (Total Capacity of Trailer)	4,950	4,950	5,940	5,940	5,940
Carrying Capacity (see Note 2)	1,500	1,125	1,350	1,850	1,875
Accommodations Sleeping (standard / optional)	3	4	4	4	6
Bed Size (standard)	60" x 80"	60" x 74"	60" x 74"	60" x 74"	60" x 74"
Second Bed Size	N/A	N/A	N/A	N/A	N/A
Dinette Size	33" x 70"	39" x 70"	44" x 92"	N/A	39" x 70"
Sofa	N/A	N/A	N/A	42" x 64"	N/A
Measurements Exterior Length (see Note 3)	19'-10"	22'-7"	26'-4"	22'-5"	25'-6"
Exterior Width (see Note 3)	90"	90"	90"	90"	90"
Exterior Height (see Note 3)	9'-11"	9'-11"	9'-11"	9'-11"	9'-11"
Interior Height	76"	76"	76"	76"	76"
Capacities Fresh Water System (gallons)	32	32	32	32	32
Gray Water Tank (gallons)	24	24	24	24	24
Black Water Tank (gallons)	24	24	24	24	24
Air Conditioner Size	13,500	13,500	13,500	13,500	13,500
Awning Size	10'	12'	14'	12'	14'
Convertor Size (amps)	55	55	55	55	55
Furnace Rating (Btu)	18,000	18,000	25,000	18,000	18,000
Propane Gas Capacity (pounds)	40	40	40	40	40
Tires	205/75R14-C	205/75R14-C	205/75R14-C	205/75R14-C	205/75R14-C
Water Heater (gallons)	6	6	6	6	6

Notes

- (1) All weights, dimensions, and capacities shown are approximate values.
- (2) Unloaded vehicle weight and carrying capacity will vary depending upon optional equipment. Full propane tanks are factored into carrying capacity. Skyline weighs every unit at the factory. See trailer weight information label located inside the front entry door for specific unloaded vehicle weight and cargo carrying capacity.
- (3) Dimensions stated to industry standards. Exterior length includes approximately a four foot hitch on travel trailers. Exterior height includes air conditioner, if installed. Exterior width does not include the width of the fenders and tires, which may extend up to 5" on each side of the body.

Interior

Cabinets

- Hardwood Frame Cabinet Doors
- Full Extension Ball Bearing Drawer Guides
- High Pressure Laminate Counter Tops
- Maple Cabinets

Decor

- Color-Coordinated Designer Interiors
- Embossed Vinyl Flooring
- Carpet & Pad as Shown on Floor Plans
- Extra Padded Dinette Seat Cushions w/Bolsters in Accent Fabric
- Mini Blinds at All Windows Except Bunks
- Decorative Glass Insert Cabinet Doors in Select Areas

Kitchen & Living Area

- Dometic® Double Door Refrigerator
- Wedgewood® 3 Burner Range w/Oven & Piezo
- Radius Counter Tops
- Power Range Hood w/Light
- Large Carousel Dometic® Microwave Oven w/Clock
- Acrylic Kitchen Sink w/High Rise Faucet
- Decorative Wall Border in Kitchen & Living Area
- Systems Monitor Panel
- 25,000 Btu Ducted Furnace
- 13.5 MBtu Roof Ducted Air Conditioner w/Wall Thermostat
- 120 V to 12 V Power Convertor
- TV Antenna w/Booster
- Park Cable Hookup for TV
- 12V AM/FM/DVD/MP3 Stereo w/iPod Connection, Interior & Exterior Speakers
- Six Gallon Gas/DSI Water Heater

Bedroom & Bath

- Color-Coordinated Quilted Bedspread
- Deluxe Headboard
- Lift-Up Bed Storage w/Gas Piston Struts
- Evergreen® Mattress
- ABS Tub w/ABS Wall Surround
- Foot Flush Toilet
- Deluxe Medicine Cabinet w/Mirror
- Towel Ring & Toilet Paper Holder
- Skylight Over Tub
- Power Bath Vent

Exterior

Roof Construction

- Tapered Roof Construction to Promote Water Runoff
- Seamless One-Piece Roof w/Manufacturer's 12-Year Warranty
- Awning Drip Rail w/Extra Long Down Spouts

Wall Construction

- Wall Studs on 16" Centers (Maximum)
- Steel Strap Reinforcement on Walls for Superior Durability
- R-7 Settle-Resistant Insulation
- Twist Locks on All Storage Doors
- Clamp Ring Dark Tint Safety Glass Radius Corner Windows
- Patio Convenience Light
- Radius Entry Door w/Screen
- Assist Handle at Entry Door

Chassis Construction

- Cambered I-Beam Steel Chassis w/Steel Outriggers
- Battery Rack
- Electric Brakes at All Wheels
- Goodyear® Radial Tires
- Black Rotocast Wheel Wells (Most Models)
- Safety Chains & Breakaway Safety Switch
- Super Lube Hubs on Axles
- Four Stabilizer Jacks (Two on Fifth Wheels)

Floor Construction

- 5/8" Tongue & Groove Floor Decking
- Tightly Sealed Woven Polyethylene Underbelly

Features

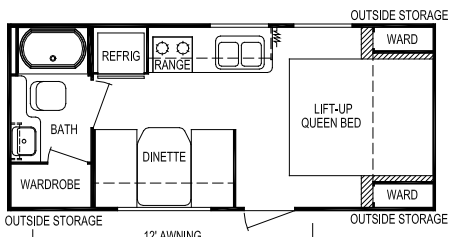
- Two 20 lb. LP Propane Tanks w/Auto Changeover
- Holding Tanks w/Drain Outlet
- Black Tank Flush
- Rear Bumper w/Sewer Hose Carrier
- Water Heater Bypass

Security & Safety

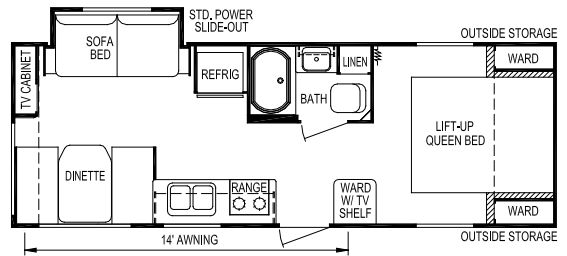
- Smoke Detector
- Propane Leak Detectors
- Carbon Monoxide Alarm
- Flush Door Latch w/Integral Dead Bolt Lock
- Fire Extinguisher

Popular Options

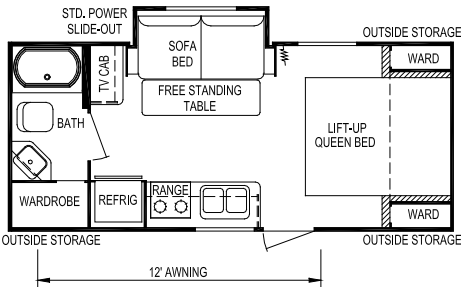
- Power Side Awning
- Chrome Wheels
- Outside Shower
- **Laminated Sidewalls, Including:**
 - Welded Aluminum Frame Sidewalls w/Block Foam Insulation, Steel Cabinet Backers, Luan Exterior Panel Under Fiberglass Exterior, and Luan Interior Panel All bonded Together.
 - Fiberglass Exterior On Front & Rear Walls



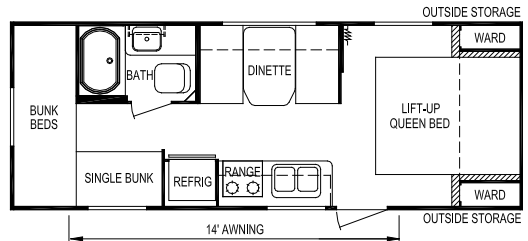
Model 196



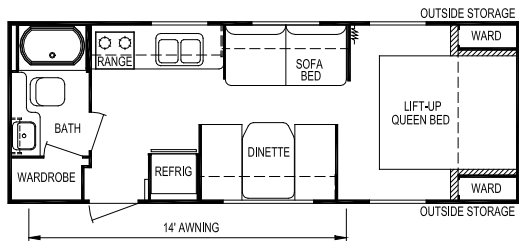
Model 241



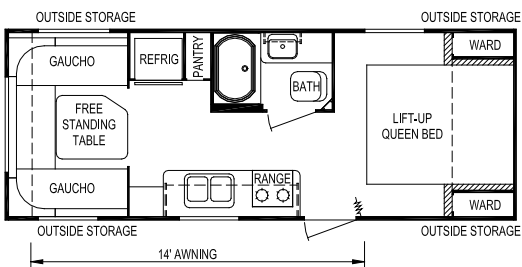
Model 204



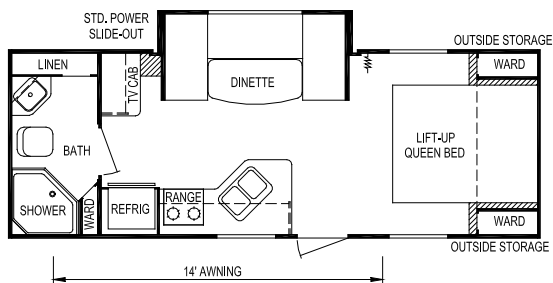
Model 249



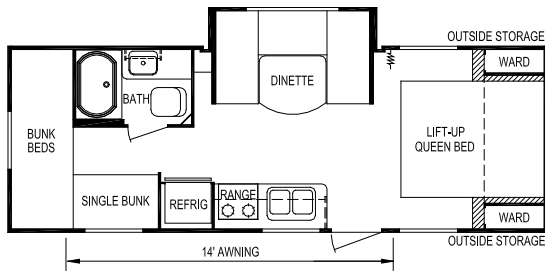
Model 207



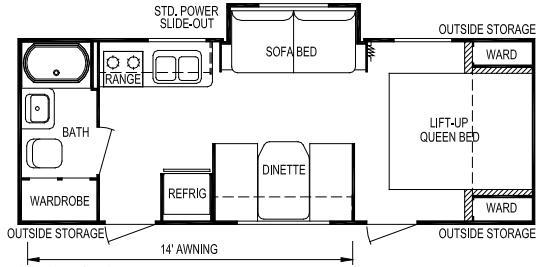
Model 218



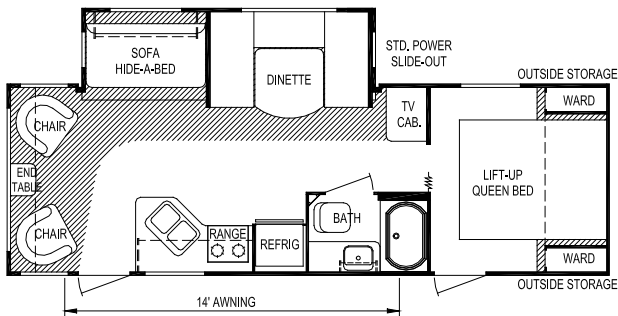
Model 236



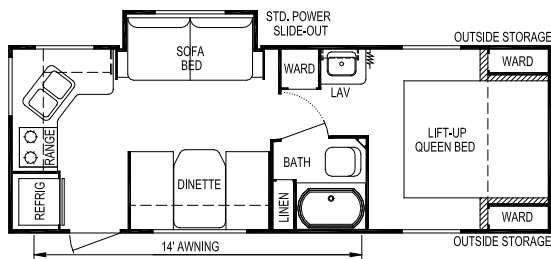
Model 250



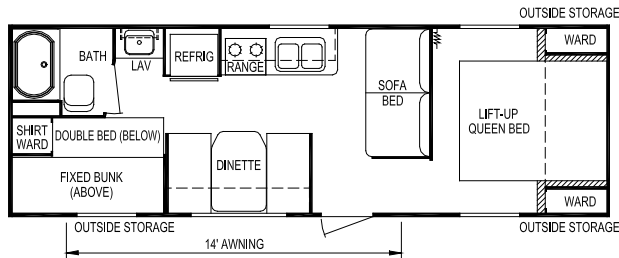
Model 254



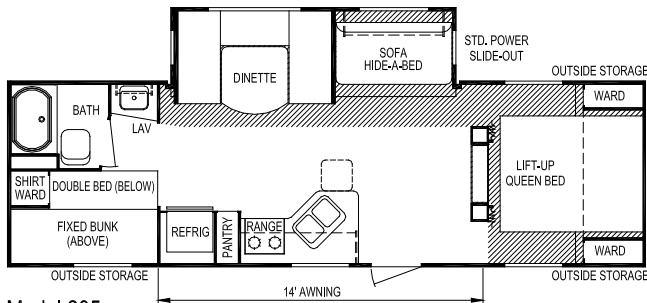
Model 258



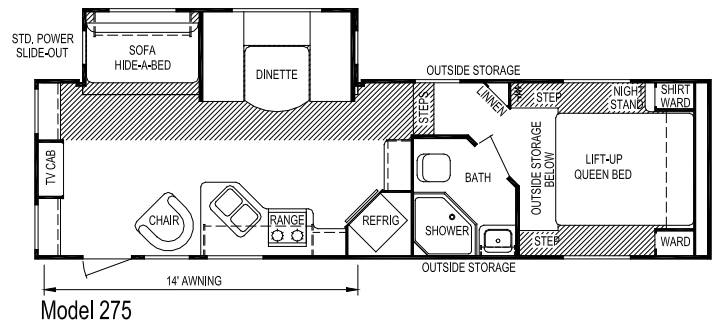
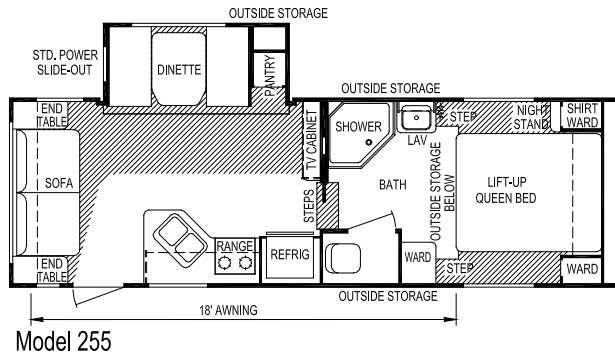
Model 260



Model 268



Model 285



Specifications

TRAVEL TRAILERS

Model	196	204	207	218	236	241	249
Weights							
Unloaded Vehicle Weight (see Note 2)	3,775	4,050	4,375	3,900	4,650	4,700	4,350
Dry Hitch Weight	425	400	500	550	525	575	525
Dry Axle Weight	3,350	3,650	3,875	3,350	4,125	4,125	3,825
GVWR (Total Capacity of Trailer)	5,600	5,600	6,200	6,200	6,200	6,200	6,200
Carrying Capacity (see Note 2)	1,675	1,375	1,650	2,150	1,375	1,325	1,675
Accommodations							
Sleeping (standard / optional)	4	4	6	4	4	6	6
Bed Size (standard)	60" x 74"	60" x 74"	60" x 74"	60" x 74"	60" x 74"	60" x 74"	60" x 74"
Second Bed Size	N/A	N/A	N/A	N/A	N/A	N/A	(2) 32" x 90" (1) 28" x 76"
Dinette Size	40" x 71"	N/A	40" x 71"	60" x 90"	44" x 92"	40" x 71"	40" x 71"
Sofa	N/A	42" x 64"	42" x 64"	N/A	N/A	42" x 64"	N/A
Measurements							
Exterior Length (see Note 3)	22'-10"	23'-4"	27'-0"	25'-11"	27'-1"	28'-1"	26'-4"
Exterior Width (see Note 3)	96"	96"	96"	96"	96"	96"	96"
Exterior Height (see Note 3)	10'-1"	10'-1"	10'-1"	10'-2"	10'-2"	10'-2"	10'-1"
Interior Height	78"	78"	78"	78"	78"	78"	78"
Capacities							
Fresh Water System (gallons)	36	36	36	36	36	36	36
Gray Water Tank (gallons)	31	31	31	31	31	31	31
Black Water Tank (gallons)	31	31	31	31	31	40	35
Air Conditioner Size	13,500	13,500	13,500	13,500	13,500	13,500	13,500
Awning Size	12'	12'	14'	14'	14'	14'	14'
Convertor Size (amps)	55	55	55	55	55	55	55
Furnace Rating (Btu)	25,000	25,000	25,000	25,000	25,000	25,000	25,000
Propane Gas Capacity (pounds)	40	40	40	40	40	40	40
Tires	ST205/ 75R14-C	ST205/ 75R14-C	ST205/ 75R14-C	ST205/ 75R14-C	ST205/ 75R14-C	ST205/ 75R14-C	ST205/ 75R14-C
Water Heater (gallons)	6	6	6	6	6	6	6

Notes

(1) All weights, dimensions, and capacities shown are approximate values.

(2) Unloaded vehicle weight and carrying capacity will vary depending upon optional equipment. Full propane tanks are factored into carrying capacity. Skyline weighs every unit at the factory. See trailer weight information label located inside the front entry door for specific unloaded vehicle weight and cargo carrying capacity.

(3) Dimensions stated to industry standards. Exterior length includes approximately a four foot hitch on travel trailers. Exterior height includes air conditioner, if installed. Exterior width does not include the width of the awning, if installed.

TRAVEL TRAILERS

FIFTH WHEELS

Model	250	254	258	260	268	285	255	275
Weights Unloaded Vehicle Weight (see Note 2)	4,350	4,075	5,875	4,725	4,625	6,050	6,650	7,000
Dry Hitch Weight	525	400	625	600	500	700	1,500	1,700
Dry Axle Weight	3,825	3,675	5,250	4,125	4,125	5,350	5,150	5,300
GVWR (Total Capacity of Trailer)	6,200	6,200	7,750	6,200	6,200	7,750	9,600	9,600
Carrying Capacity (see Note 2)	1,675	2,000	1,650	1,275	1,400	1,475	2,900	2,330
Accommodations Sleeping (standard / optional)	6	6	6	6	8	9	6	6
Bed Size (standard)	60" x 74"	60" x 74"	60" x 74"	60" x 74"	60" x 74"	60" x 74"	60" x 74"	60" x 74"
Second Bed Size	(2) 32" x 90" (1) 28" x 76"	N/A	N/A	N/A	48" x 74" 28" x 76"	48" x 74" 28" x 76"	N/A	N/A
Dinette Size	48" x 79"	40" x 71"	48" x 79"	40" x 71"	40" x 71"	48" x 79"	40" x 71"	48" x 79"
Sofa	N/A	42" x 64"	44" x 74"	42" x 64"	42" x 64"	44" x 74"	42" x 64"	44" x 74"
Measurements Exterior Length (see Note 3)	27'-8"	26'-9"	29'-8"	27'-8"	29'-7"	32'-0"	26'-6"	30'-10"
Exterior Width (see Note 3)	96"	96"	96"	96"	96"	96"	96"	96"
Exterior Height (see Note 3)	10'-1"	10'-2"	11'-0"	10'-1"	10'-1"	11'-0"	12'-1"	12'-1"
Interior Height	78"	78"	78"	78"	78"	78"	84"	84"
Capacities Fresh Water System (gallons)	36	36	36	36	36	36	46	46
Gray Water Tank (gallons)	31	31	40	62	31	40	71	62
Black Water Tank (gallons)	35	31	40	31	31	40	40	40
Air Conditioner Size	13,500	13,500	13,500	13,500	13,500	13,500	13,500	13,500
Awning Size	14'	14'	14'	14'	14'	14'	18'	14'
Convertor Size (amps)	55	55	55	55	55	55	55	55
Furnace Rating (Btu)	25,000	25,000	25,000	25,000	25,000	25,000	25,000	25,000
Propane Gas Capacity (pounds)	40	40	40	40	40	40	40	40
Tires	ST205/ 75R14-C	ST205/ 75R14-C	ST205/ 75R15-C	ST205/ 75R14-C	ST205/ 75R14-C	ST205/ 75R15-C	ST225/ 75R15-D	ST225/ 75R15-D
Water Heater (gallons)	6	6	6	6	6	6	6	6

Notes

- (1) All weights, dimensions, and capacities shown are approximate values.
- (2) Unloaded vehicle weight and carrying capacity will vary depending upon optional equipment. Full propane tanks are factored into carrying capacity. Skyline weighs every unit at the factory. See trailer weight information label located inside the front entry door for specific unloaded vehicle weight and cargo carrying capacity.
- (3) Dimensions stated to industry standards. Exterior length includes approximately a four foot hitch on travel trailers. Exterior height includes air conditioner, if installed. Exterior width does not include the width of the awning, if installed.



Skyline Customer Satisfaction

Skyline Customer Satisfaction is more than just a promise. We believe you deserve quality in every aspect of ownership. To ensure your continued satisfaction, we're dedicated to providing you with a quality product along with the very best service available in our industry. Skyline's "Commitment of Excellence" will be a source of pride and satisfaction for you.

Contact your Skyline dealer for details.



NO-NONSENSE WARRANTY

Manufacturing defects reported to Skyline within one year after original retail delivery of your new Travel Trailer or Fifth Wheel by an authorized dealer will be corrected without charge and within reasonable times. Excluded are misuse (including lack of reasonable maintenance), minor imperfections, alterations, and dealer or owner improper transportation, installation, or hookup.

This warranty gives you specific legal rights. You may have other rights which vary from state to state.

Skyline's suppliers often provide additional warranties on their components beyond the Skyline factory bumper-to-bumper warranty. For example — the range, water heater, furnace, convertor, air conditioner, refrigerator, microwave and awning carry two-year supplier warranties. The one-piece roof carries a 12-year warranty. Ask your dealer for full details.

Manufacturer's Notice: All specifications, equipment, and prices are subject to change without prior notice. Production of all models subject to seasonal scheduling. Skyline Corporation reserves the right to improve a model without incorporating these changes in similar models produced at an earlier date.

Consult your automobile dealer and your recreational vehicle dealer to assure the proper match between tow vehicle and trailer. Tow vehicle and recreational unit must be properly equalized for efficient product performance and safety. Before you purchase your recreational vehicle, carefully consider the number of people it will accommodate and its end use. Manufacturer's load capacity restrictions and recommendations must be followed for safe and efficient product performance.

Your Retailer, an independent contractor, who is not an agent of Skyline Corporation, is the party responsible for your purchase contract and any additions, deletions, alterations, or attachments made to or in your recreational vehicle.



For the name of your nearest Skyline-built RV dealer, call:
Hemet, CA 1-888-442-0997
Mansfield, TX 1-800-962-7773
Elkhart, IN 1-800-736-2573

Go RVing.

Or visit us at our Web Site at www.skylinecorp.com